

**GENERAL NOTES**

- SEE SHEET A0203 FOR ADDITIONAL DIMENSIONS, DOORS, AND WALL TAGS.
- SEE A1000 SERIES FOR UNIT LAYOUTS, DIMENSIONS, AND ADDITIONAL INFORMATION NOT INCLUDED IN THIS SHEET.
- SEE INTERIOR DESIGN DRAWING FOR ADDITIONAL INFORMATION ON PUBLIC SPACE.
- ALL COLUMN FUR OUT WALLS ARE TYPE SB U.O.N.
- PROVIDE OPERABLE WINDOWS IN RESIDENTIAL UNITS:
  - PROVIDE ONE OPERABLE WINDOW PER EACH BEDROOM.
  - PROVIDE ONE OPERABLE WINDOW PER EACH LIVING ROOM.
  - PROVIDE MINIMUM ONE OPERABLE WINDOW PER STUDIO UNIT.
  - PROVIDE 3' x 6' - 7' OPERABLE WINDOW, TYP.

**SYMBOLS LEGEND**

- RA ROOF ANCHOR
- ROOF ANCHOR SUSPENSION LINE



WDG ARCHITECTURE, PLLC  
1025 CONNECTICUT AVENUE, NW  
SUITE 300  
WASHINGTON DC, 20036  
TEL 202 857 8300  
FAX 202 463 2198  
E-MAIL wdg@wdgarch.com

**ELLINWOOD + MACHADO**

3000 WILSON BOULEVARD  
SUITE 350  
ARLINGTON, VA 22201  
TEL (703)835 - 9989  
FAX  
E-MAIL lgillard@emstructural.com

EDG2 ENGINEERING DESIGN GROUP  
10411 MOTOR CITY DRIVE  
SUITE 550  
BETHESDA, MD 20817  
TEL (202) 466 - 2222  
FAX (202) 466 - 2232  
E-MAIL craig.johnson@edg2.com

**WDG INTERIORS**

1025 CONNECTICUT AVE NW  
SUITE 300  
WASHINGTON DC 20036  
TEL (202) 857 - 8300  
FAX (202) 463 - 2198  
E-MAIL wdg@wdgarch.com

LSG LANDSCAPE ARCHITECTURE  
1775 GREENSBORO STATION  
PLACE, SUITE 110  
TYSONS, VA 22102  
TEL (703) 821 - 2045  
FAX (703) 448 - 0597  
E-MAIL info@lsginc.com

**1701 H STREET DEVELOPMENT**  
1701 H STREET NE  
WASHINGTON DC

GRUBB PROPERTIES  
4601 PARK ROAD SUITE 450  
CHARLOTTE, NC 28229

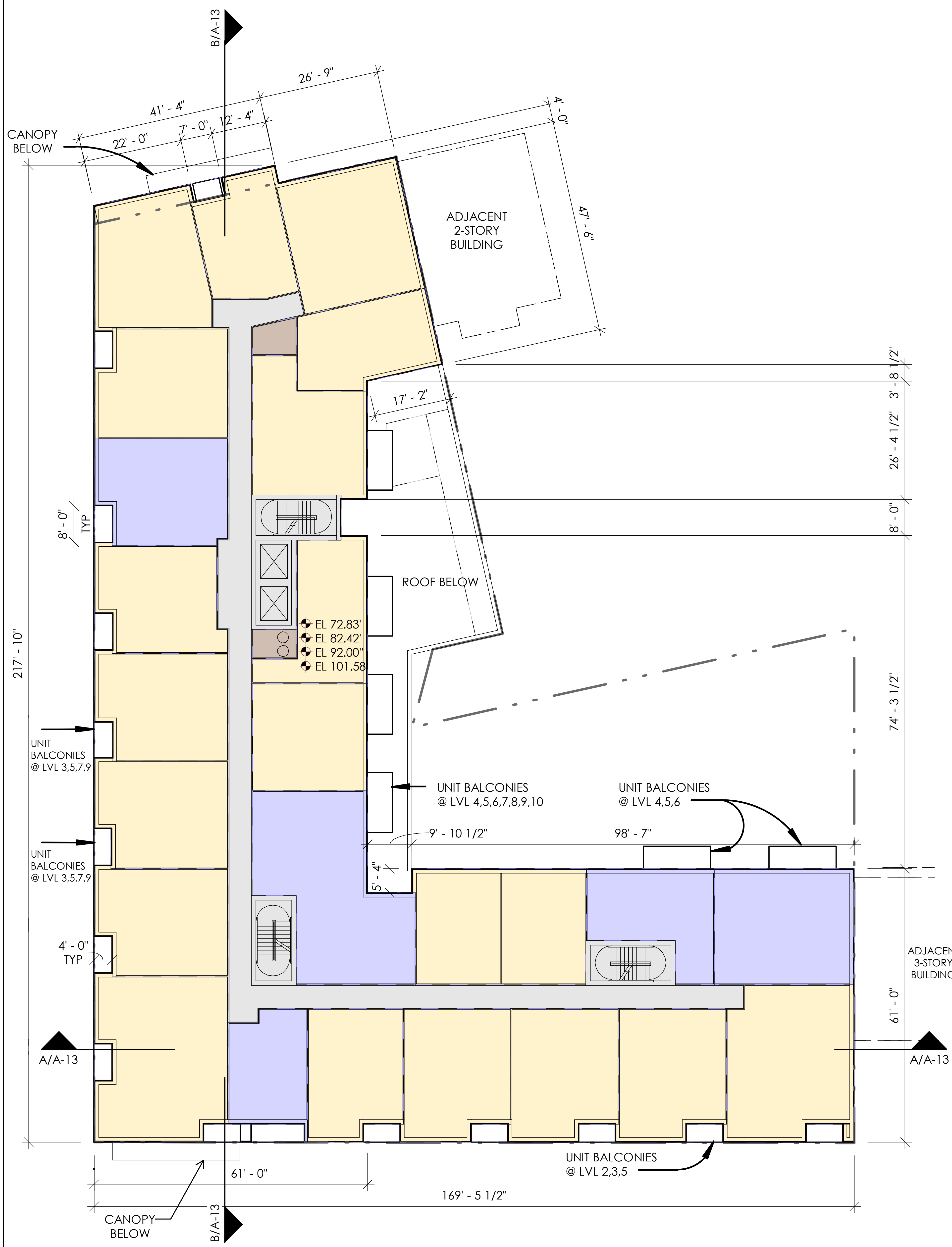
FOREFRONT COMPANY  
8229 BOONE BLVD, SUITE 400  
VIENNA, VA 22182

**PROFESSIONAL SEAL**

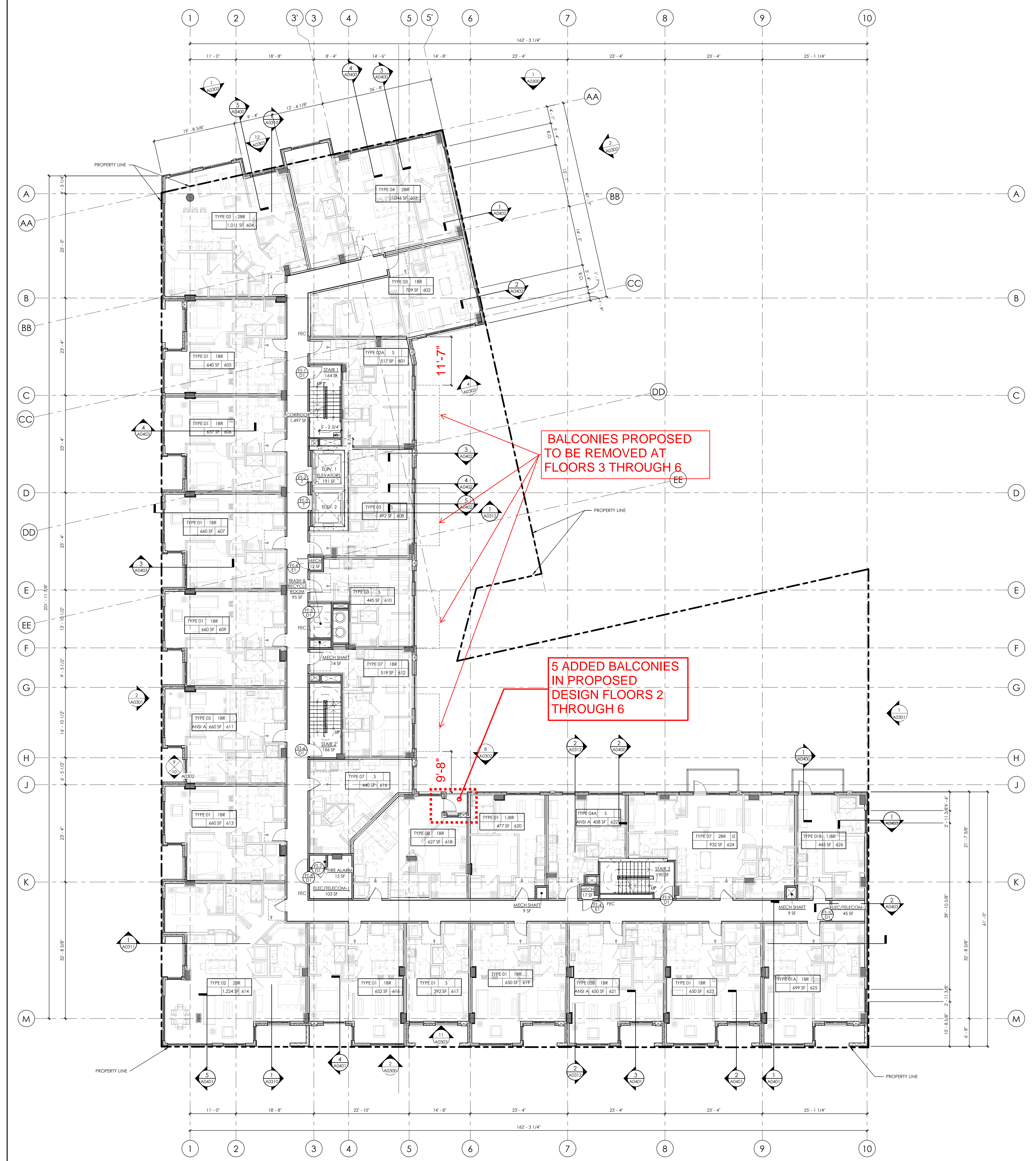
WDG PROJECT NO: WA19024

**LEVEL 6 - FLOOR PLAN**  
**(REPRESENTS FLOORS 3 THROUGH 6)**  
SCALE:

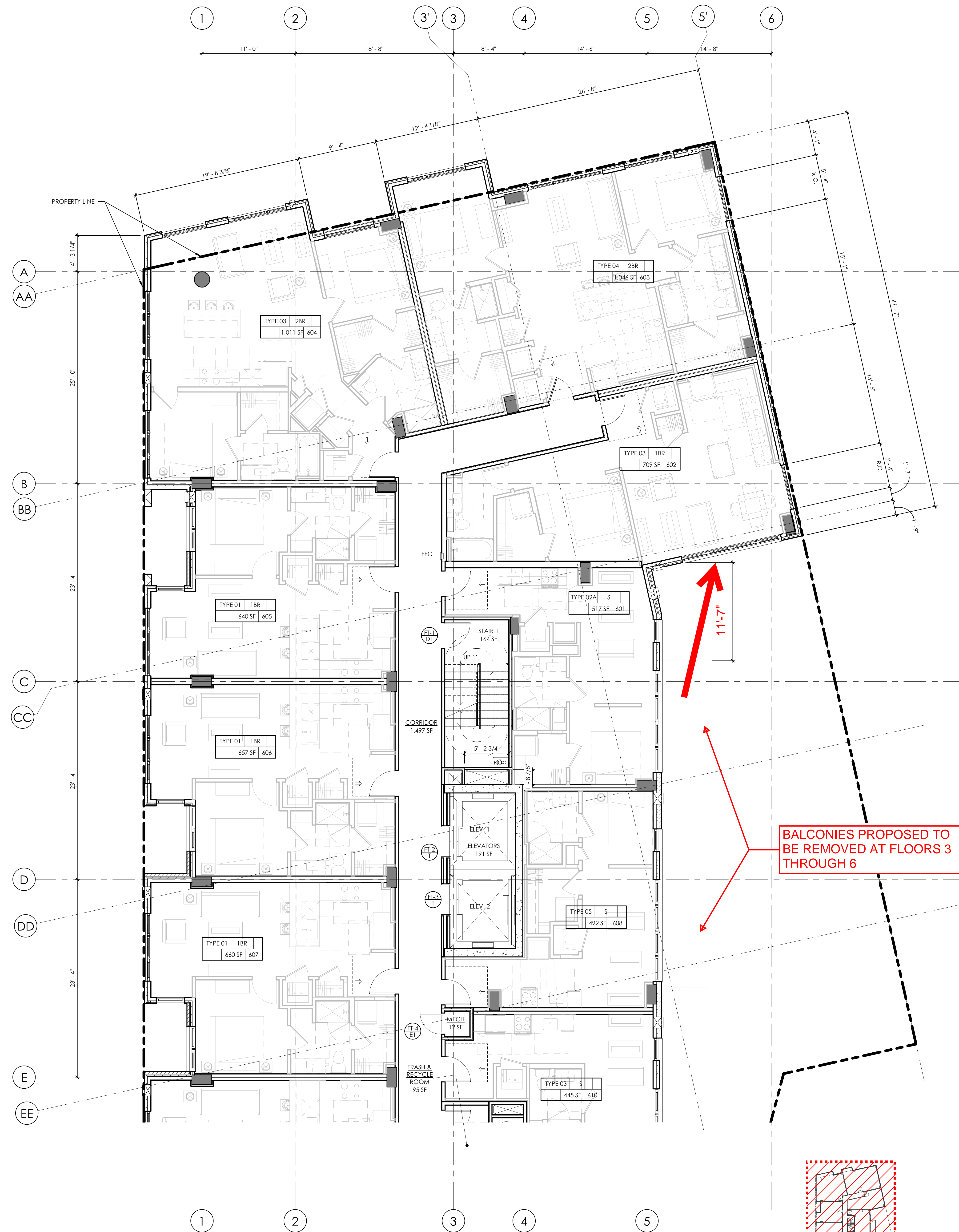
**SK07**



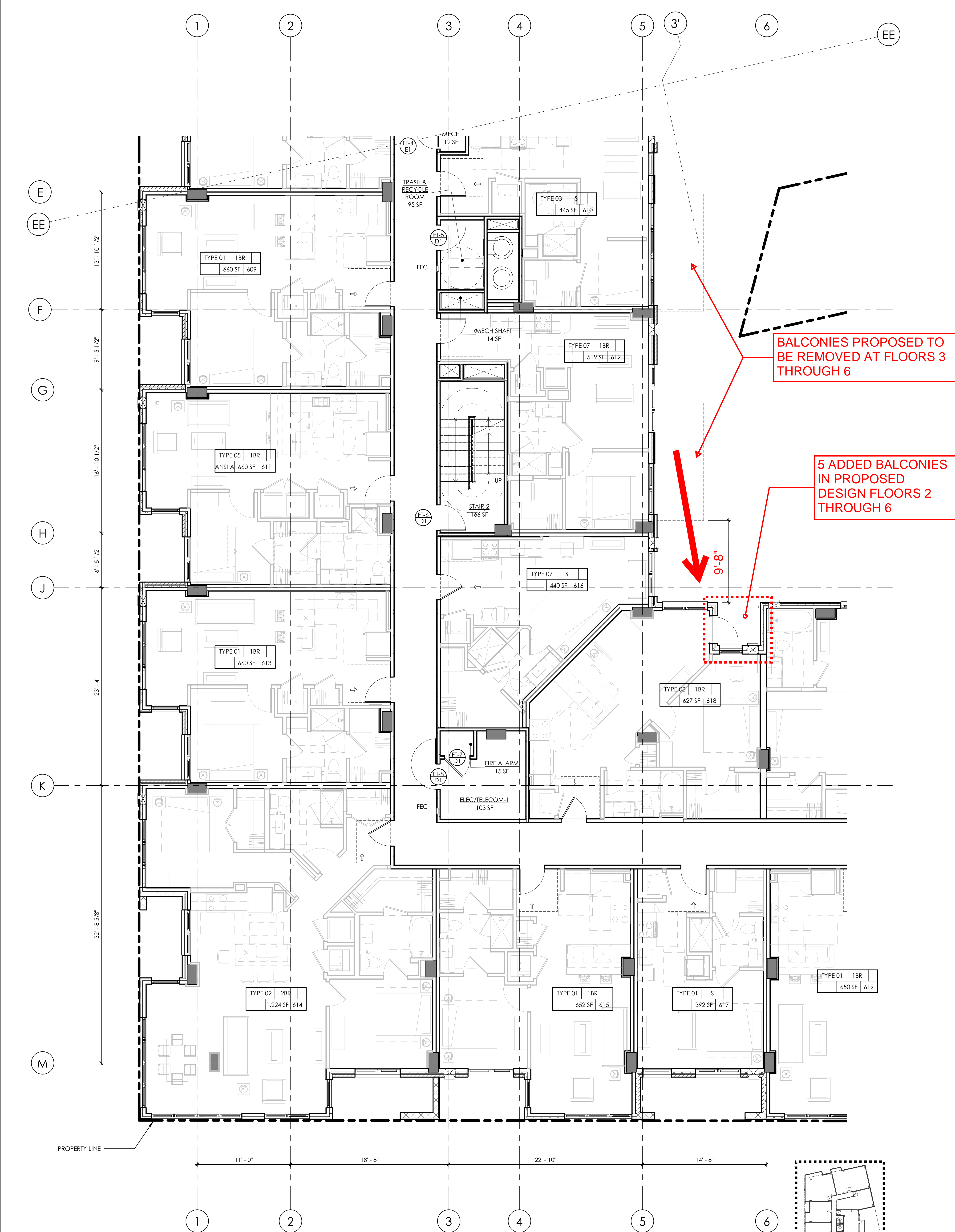
**LEVEL 3 - 6 FLOOR PLAN - APPROVED PUD DESIGN**



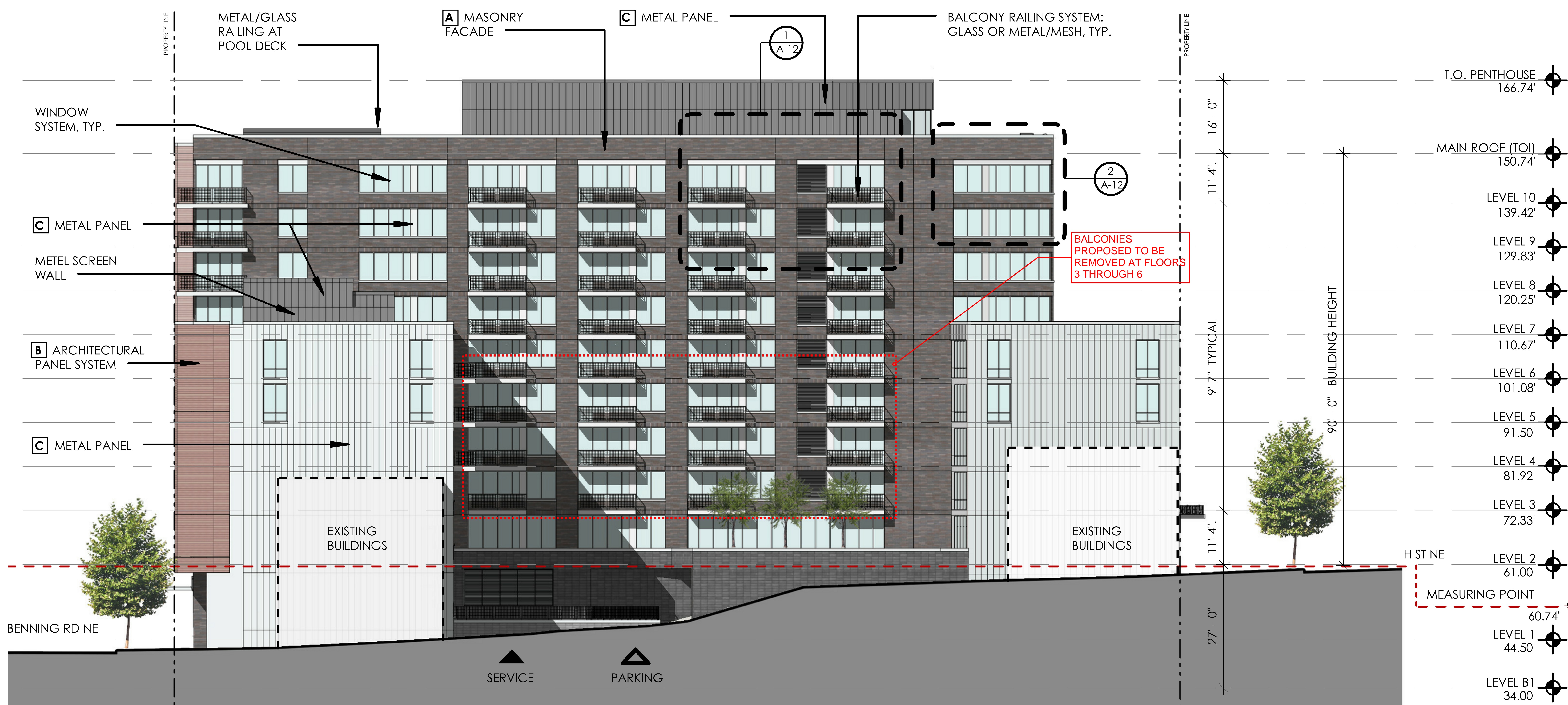
**LEVEL 6 FLOOR PLAN - PROPOSED DESIGN (REPRESENTS FLOORS 3 THROUGH 6)**



**LEVEL 6 FLOOR PLAN (PARTIAL A) - PROPOSED DESIGN**  
(REPRESENTS FLOORS 3 THROUGH 6)



**LEVEL 6 FLOOR PLAN (PARTIAL B) - PROPOSED DESIGN**  
(REPRESENTS FLOORS 3 THROUGH 6)



- T.O. PENTHOUSE 166.74'
- MAIN ROOF (TOI) 150.74'
- LEVEL 10 139.42'
- LEVEL 9 129.83'
- LEVEL 8 120.25'
- LEVEL 7 110.67'
- LEVEL 6 101.08'
- LEVEL 5 91.50'
- LEVEL 4 81.92'
- LEVEL 3 72.33'
- H ST NE LEVEL 2 61.00'
- MEASURING POINT 60.74'
- LEVEL 1 44.50'
- LEVEL B1 34.00'

BENNING RD NE

SERVICE PARKING

PROPERTY LINE

PROPERTY LINE

16'-0"

11'-4"

9'-7" TYPICAL

11'-4"

27'-0"

90'-0" BUILDING HEIGHT

**EXTERIOR MATERIAL LEGEND**

**GENERAL ELEVATION NOTE:**  
THE GRAPHICS SHOWN ARE REPRESENTATIVE ONLY TO INDICATE DIFFERENT MATERIALS.

|         |   |        |   |
|---------|---|--------|---|
| MAS-01  | FACE BRICK<br>• UTILITY SIZE<br>• RUNNING BOND  | CS-01  | CAST STONE  |
| MAS-02  | ARCHITECTURAL GROUND FACE CMU   | W-01   | WINDOW SYSTEM, TYP. (SEE NOTE 1)<br>• GL-01   |
| PNL-01  | FIBER CEMENT PANEL SYSTEM<br>PANEL HORIZONTAL INSTALLATION<br>• CUSTOM PAINT TO MATCH ARCHITECT'S CONTROL SAMPLE. (SILVERSMITH)                         | W-02   | STOREFRONT SYSTEM, TYP. (SEE NOTE 2)<br>• GL-01                                     |
| PNL-02  | FIBER CEMENT PANEL SYSTEM<br>PANEL VERTICAL INSTALLATION<br>• CUSTOM PAINT TO MATCH ARCHITECT'S CONTROL SAMPLE. (SILVERSMITH)                           | RAL-01 | PRE-FABRICATED ALUMINUM RAILING SYSTEM<br>• FINISH TO MATCH PT.01d                  |
| PNL-03  | FIBER CEMENT PANEL SYSTEM<br>PANEL HORIZONTAL INSTALLATION<br>• CUSTOM PAINT TO MATCH ARCHITECT'S CONTROL SAMPLE (BURGUNDY FERRO/ BURGUNDY FERRO LIGHT) | RAL-02 | GLASS RAILING SYSTEM<br>• GL-03<br>• FINISH TO MATCH VERTICAL PICKET RAILING FINISH |
| PNL-04  | FIBER CEMENT PANEL SYSTEM<br>PANEL VERTICAL INSTALLATION<br>• CUSTOM PAINT TO MATCH ARCHITECT'S CONTROL SAMPLE. (MEDIUM GRAY)                           | RAL-03 | PICKET RAILING SYSTEM AT DOG PARK<br>• FACTORY STANDARD FINISH                      |
| PNL-05  | FIBER CEMENT PANEL SYSTEM<br>PANEL HORIZONTAL INSTALLATION<br>• CUSTOM PAINT TO MATCH ARCHITECT'S CONTROL SAMPLE. (MEDIUM GRAY)                         | RAL-04 | PICKET RAILING SYSTEM AT POOL RAMP<br>• FACTORY STANDARD FINISH                     |
| PNL-06  | COMPOSITE METAL PANEL AT CANOPY<br>• COLOR: PT.01d  | RAL-05 | PICKET RAILING SYSTEM AT RETAINING WALL<br>• FACTORY STANDARD FINISH                |
| PNL-07  | FIBER CEMENT PANEL SYSTEM<br>RIBBED PANEL VERTICAL INSTALLATION<br>• CUSTOM PAINT TO MATCH ARCHITECT'S CONTROL SAMPLE. (MEDIUM GRAY)                    | RAL-06 | PICKET RAILING SYSTEM AT BIO-RETENTION<br>• FACTORY STANDARD FINISH                 |
| CONC-01 | ARCHITECTURAL CONCRETE WITH FORMLINER   |        |   |
| CONC-02 | ARCHITECTURAL CONCRETE  |        |   |

**WDG**

WDG ARCHITECTURE, PLLC  
1025 CONNECTICUT AVENUE, NW  
SUITE 300  
WASHINGTON DC, 20036  
TEL: 202 857 8300  
FAX: 202 463 2198  
E-MAIL: wdg@wdgarch.com

ELLINWOOD + MACHADO  
3000 WILLSON BOULEVARD  
SUITE 350  
ARLINGTON, VA 22201  
TEL: (703)835 - 9989  
FAX: -  
E-MAIL: lgillard@emstructural.com

EDG2 ENGINEERING DESIGN GROUP  
10411 MOTOR CITY DRIVE  
SUITE 550  
BETHESDA, MD 20817  
TEL: (202) 466 - 2222  
FAX: (202) 466 - 2232  
E-MAIL: craig.johnson@edg2.com

WDG INTERIORS  
1025 CONNECTICUT AVE NW  
SUITE 300  
WASHINGTON DC 20036  
TEL: (202) 857 - 8300  
FAX: (202) 463 - 2198  
E-MAIL: wdg@wdgarch.com

LSG LANDSCAPE ARCHITECTURE  
1775 GREENSBORO STATION  
PLACE, SUITE 110  
TYSONS, VA 22102  
TEL: (703) 821 - 2045  
FAX: (703) 448 - 0597  
E-MAIL: info@lsginc.com

**1701 H STREET DEVELOPMENT**  
1701 H STREET NE  
WASHINGTON DC

GRUBB PROPERTIES  
4601 PARK ROAD SUITE 450  
CHARLOTTE, NC 28209

FOREFRONT COMPANY  
8229 BOONE BLVD, SUITE 400  
VIENNA, VA 22182

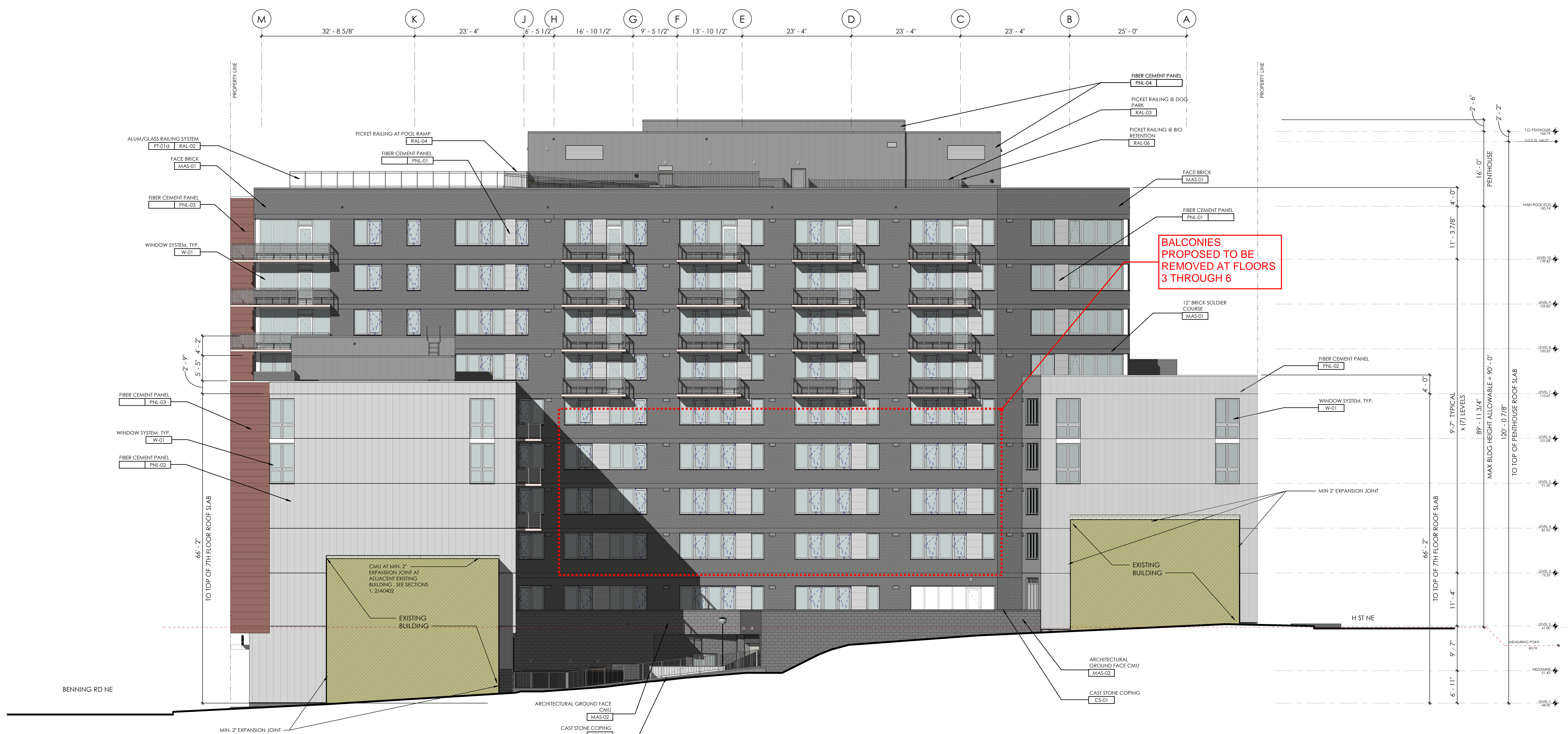
PROFESSIONAL SEAL

WDG PROJECT NO: WA19024

EAST ELEVATION - PROPOSED DESIGN

SCALE: 1/8" = 1'-0"

SK09



**EAST ELEVATION - PROPOSED DESIGN**

|                 | TOTAL UNIT COUNT | BALCONY COUNT | % of UNITS w/ BALCONIES |
|-----------------|------------------|---------------|-------------------------|
| PROPOSED DESIGN | 181              | 87            | 48%                     |

**EXTERIOR MATERIAL LEGEND**

**GENERAL ELEVATION NOTE:**  
THE GRAPHICS SHOWN ARE REPRESENTATIVE ONLY TO INDICATE DIFFERENT MATERIALS.

|         |   |        |  |
|---------|---|--------|--|
| MAS-01  | FACE BRICK<br>• UTILITY SIZE<br>• RUNNING BOND  | CS-01  | CAST STONE   |
| MAS-02  | ARCHITECTURAL GROUND FACE CMU<br>• DIM GREY   | W-01   | WINDOW SYSTEM, TYP. (SEE NOTE 1)<br>• GL-01                              |
| PNL-01  | FIBER CEMENT PANEL SYSTEM<br>PANEL HORIZONTAL INSTALLATION<br>• CUSTOM PAINT TO MATCH ARCHITECT'S CONTROL SAMPLE. (SILVERSMITH)                         | W-02   | STOREFRONT SYSTEM, TYP. (SEE NOTE 2)<br>• GL-01                          |
| PNL-02  | FIBER CEMENT PANEL SYSTEM<br>PANEL VERTICAL INSTALLATION<br>• CUSTOM PAINT TO MATCH ARCHITECT'S CONTROL SAMPLE. (SILVERSMITH)                           | RAL-01 | PRE-FABRICATED ALUMINUM RAILING SYSTEM<br>• FINISH TO MATCH PT.01d       |
| PNL-03  | FIBER CEMENT PANEL SYSTEM<br>PANEL HORIZONTAL INSTALLATION<br>• CUSTOM PAINT TO MATCH ARCHITECT'S CONTROL SAMPLE (BURGUNDY FERRO/ BURGUNDY FERRO LIGHT) | RAL-02 | GLASS RAILING SYSTEM<br>• FINISH TO MATCH VERTICAL PICKET RAILING FINISH |
| PNL-04  | FIBER CEMENT PANEL SYSTEM<br>PANEL VERTICAL INSTALLATION<br>• CUSTOM PAINT TO MATCH ARCHITECT'S CONTROL SAMPLE. (MEDIUM GRAY)                           | RAL-03 | PICKET RAILING SYSTEM AT DOG PARK<br>• FACTORY STANDARD FINISH           |
| PNL-05  | FIBER CEMENT PANEL SYSTEM<br>PANEL HORIZONTAL INSTALLATION<br>• CUSTOM PAINT TO MATCH ARCHITECT'S CONTROL SAMPLE. (MEDIUM GRAY)                         | RAL-04 | PICKET RAILING SYSTEM AT POOL RAMP<br>• FACTORY STANDARD FINISH          |
| PNL-06  | COMPOSITE METAL PANEL AT CANOPY<br>• COLOR: PT.01d  | RAL-05 | PICKET RAILING SYSTEM AT RETAINING WALL<br>• FACTORY STANDARD FINISH     |
| PNL-07  | FIBER CEMENT PANEL SYSTEM<br>RIBBED PANEL VERTICAL INSTALLATION<br>• CUSTOM PAINT TO MATCH ARCHITECT'S CONTROL SAMPLE. (MEDIUM GRAY)                    | RAL-06 | PICKET RAILING SYSTEM AT BIO-RETENTION<br>• FACTORY STANDARD FINISH      |
| CONC-01 | ARCHITECTURAL CONCRETE WITH FORMLINER   |        |  |
| CONC-02 | ARCHITECTURAL CONCRETE  |        |  |



WDG ARCHITECTURE, PLLC  
1025 CONNECTICUT AVENUE, NW  
SUITE 300  
WASHINGTON DC, 20036  
TEL: 202.857.8300  
FAX: 202.463.2198  
E-MAIL: wdg@wdgarch.com

ELLINWOOD + MACHADO  
3000 WILLSON BOULEVARD  
SUITE 350  
ARLINGTON, VA 22201  
TEL: (703)835-9989  
FAX: -  
E-MAIL: lgillard@emstructural.com

EDG2 ENGINEERING DESIGN GROUP  
10411 MOTOR CITY DRIVE  
SUITE 550  
BETHESDA, MD 20817  
TEL: (202) 466-2222  
FAX: (202) 466-2232  
E-MAIL: craig.johnson@edg2.com

WDG INTERIORS  
1025 CONNECTICUT AVE NW  
SUITE 300  
WASHINGTON DC 20036  
TEL: (202) 857-8300  
FAX: (202) 463-2198  
E-MAIL: wdg@wdgarch.com

LSG LANDSCAPE ARCHITECTURE  
1775 GREENSBORO STATION  
PLACE, SUITE 110  
TYSONS, VA 22102  
TEL: (703) 821-2045  
FAX: (703) 448-0597  
E-MAIL: info@lsginc.com

**1701 H STREET DEVELOPMENT**  
1701 H STREET NE  
WASHINGTON DC

GRUBB PROPERTIES  
4601 PARK ROAD SUITE 450  
CHARLOTTE, NC 28209

FOREFRONT COMPANY  
8229 BOONE BLVD, SUITE 400  
VIENNA, VA 22182

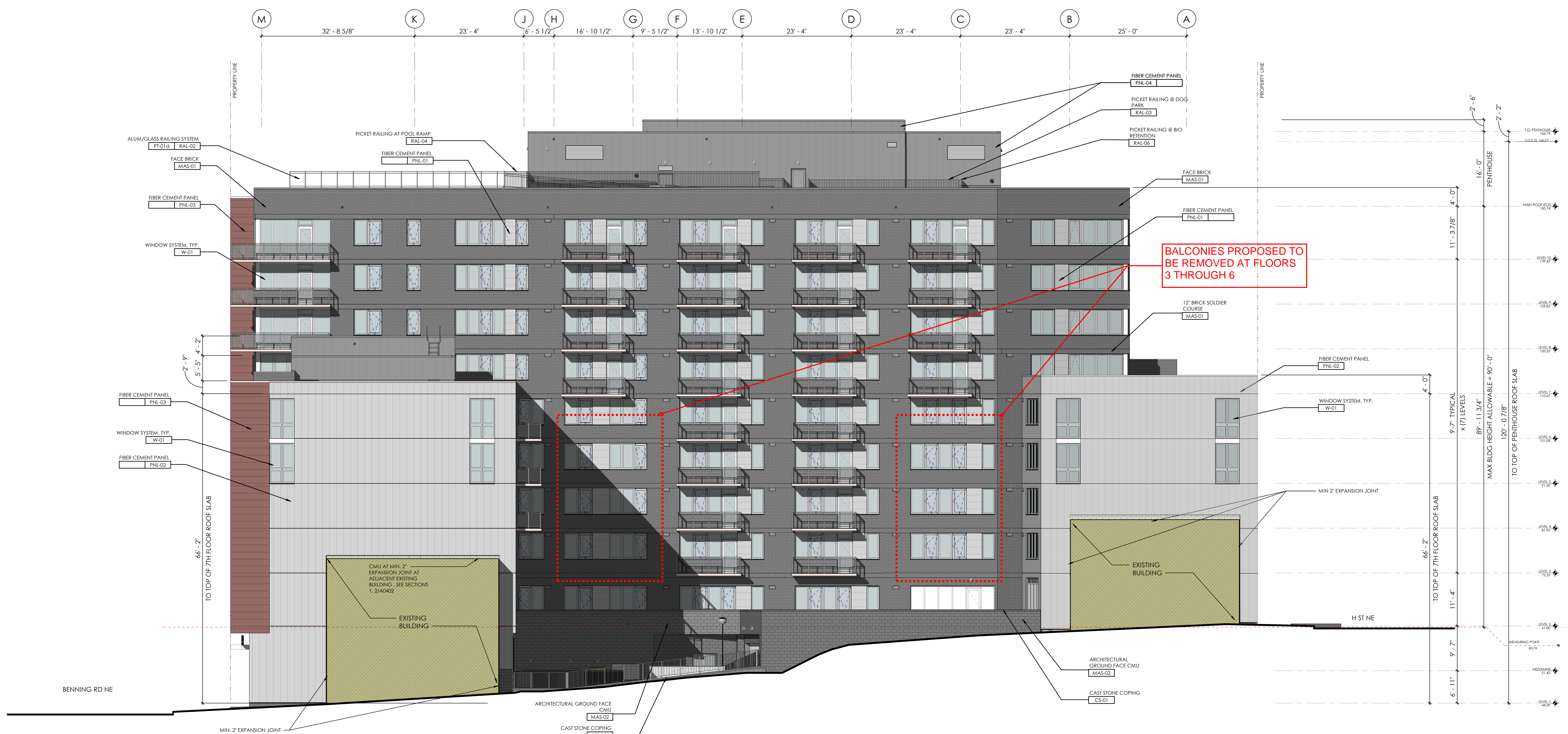
PROFESSIONAL SEAL

WDG PROJECT NO: WA19024

EAST ELEVATION - PROPOSED DESIGN

SCALE: 1/8" = 1'-0"

SK09a



**EAST ELEVATION - PROPOSED DESIGN - OPTION a**

| PROPOSED DESIGN | TOTAL UNIT COUNT | BALCONY COUNT | % of UNITS w/ BALCONIES |
|-----------------|------------------|---------------|-------------------------|
|                 | 181              | 95            | 52%                     |